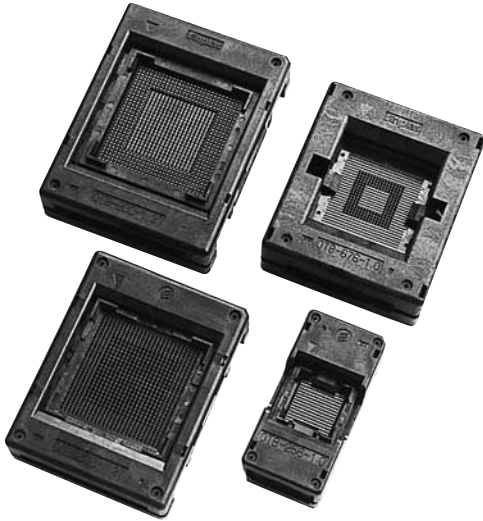


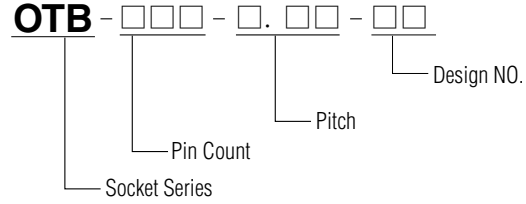
BGA

BALL GRID ARRAY

Applicable IC/BGA OPEN TOP TYPE SOCKET



ORDERING PROCEDURE



SPECIFICATIONS

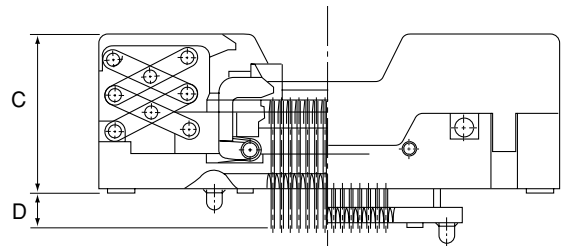
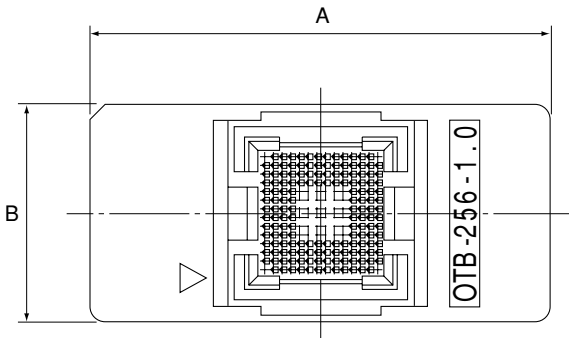
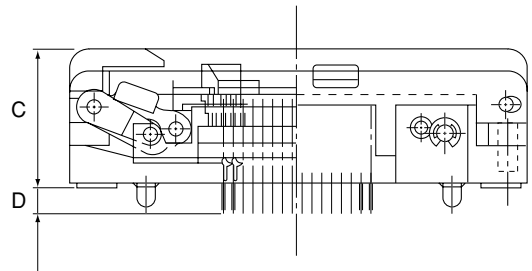
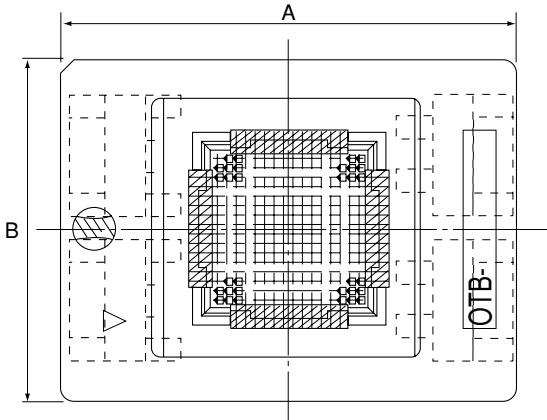
- Contact resistance: Initial 50mΩ (At 10 mA) INITIAL
- Maximum voltage : AC700V RMS (for 1 minute)
- Insulation resistance: 1,000 MΩ or higher (At DC 500V)
- Rated current: 1A
- Operating temperature range: -65°C~+150°C
- Terminal strength against pulling: 0.5Kg (1min)
- Insertion: Min 10,000 times (mechanical)

MATERIAL

- Body: PEI, PES
- Contact: BeCu, Au plating (Ni-base)

※RoHS compliant

APPLICABLE IC DIMENSIONS & SOCKET DIMENSIONS



OTB-153 SERIES (1.27mm PITCH)

Unit: mm

PART NO.	APPLICABLE IC DIMENSIONS (REF.)					OUTSIDE DIMENSIONS (REF.)				REMARKS
	BODY SIZE	GRID	ROW/ARRAY	LEADS NUMBER	PITCH	A	B	C	D	
OTB-119(153)-1.27-09	14×22	7×17	Fully Array	119	1.27	33	33	17	4	PBGA
OTB-153-1.27-09	14×22	9×17	Fully Array	153						PBGA

Shrink OTB-400R SERIES (1.27mm PITCH)

PART NO.	APPLICABLE IC DIMENSIONS (REF.)					OUTSIDE DIMENSIONS (REF.)				REMARKS
	BODY SIZE	GRID	ROW/ARRAY	LEADS NUMBER	PITCH	A	B	C	D	
OTB-372(400R)-1.27-01	23×23	20×20	Depopulated	372	1.27	45	45	22	2.2	
OTB-256(400R)-1.27-01	23×23	18×18	Depopulated	256						
OTB-233(400R)-1.27-02	27×27	20×20	Fully Array	233						Plan
OTB-144(400R)-1.27-04	17×17	13×13		144						
OTB-360(400R)-1.27-03	25×25	19×19		360						

OTB-676 SERIES (1.27mm PITCH)

PART NO.	APPLICABLE IC DIMENSIONS (REF.)					OUTSIDE DIMENSIONS (REF.)				REMARKS
	BODY SIZE	GRID	ROW/ARRAY	LEADS NUMBER	PITCH	A	B	C	D	
OTB-356(676)-1.27-14	27×27	20×20	Depopulated	356	1.27	68	53	18	2.8	PBGA
OTB-429(676)-1.27-38	27×27	21×21	Depopulated	429					4	
OTB-272(676)-1.27-07	29×29	21×21	Depopulated	272					4	
OTB-483(676)-1.27-20	29×29	22×22	Fully Array	483					3.3	
OTB-240(676)-1.27-02	31×31	23×23	P.3 ROW	240					4	PBGA
OTB-304(676)-1.27-10	31×31	23×23	P.4 ROW	304					4	TBGA Cavity Down
OTB-320(676)-1.27-04	31×31	24×24	P.4 ROW	320					4	
OTB-503(676)-1.27-16	32.5×32.5	25×25	P.7 ROW	503					3.3	CBGA
OTB-625(676)-1.27-46	33×33	25×25	Fully Array	625					4	
OTB-313(676)-1.27-01	35×35	25×25	Staggered	313					4	PBGA
OTB-420(676)-1.27-17	35×35	26×26	P.5 ROW	420					4	TBGA Cavity Down
OTB-456(676)-1.27-18	35×35	26×26	P.5 ROW	456					4	PBGA

OTB-900 SERIES (1.27mm PITCH)

PART NO.	APPLICABLE IC DIMENSIONS (REF.)					OUTSIDE DIMENSIONS (REF.)				REMARKS
	BODY SIZE	GRID	ROW/ARRAY	LEADS NUMBER	PITCH	A	B	C	D	
OTB-596(900)-1.27-02	35×35	26×26	Depopulated	596	1.27	76	59	18	2.8	PBGA
OTB-465(900)-1.27-02	35×35	27×27	Depopulated	465					2.8	
OTB-400(900)-1.27-05	37.5×37.5	29×29	Depopulated	400					2.8	
OTB-480(900)-1.27-04	37.5×37.5	29×29	P.5 ROW	480					2.8	TBGA Cavity Down
OTB-549(900)-1.27-06	37.5×37.5	29×29	Depopulated	549					2.8	
OTB-760(900)-1.27-03	40×40	30×30	Depopulated	760					4.0	

Applicable IC/BGA OPEN TOP TYPE SOCKET

OTB-209 SERIES (1.0mm PITCH)

PART NO.	APPLICABLE IC DIMENSIONS (REF.)					OUTSIDE DIMENSIONS (REF.)				REMARKS
	BODY SIZE	GRID	ROW/ARRAY	LEADS NUMBER	PITCH	A	B	C	D	
OTB-209-1.0-01	14×22	11×19	Fully Array	209	1.0	49	29	19.5	2.2	

OTB-324R SERIES (1.0mm PITCH)

PART NO.	APPLICABLE IC DIMENSIONS (REF.)					OUTSIDE DIMENSIONS (REF.)				REMARKS
	BODY SIZE	GRID	ROW/ARRAY	LEADS NUMBER	PITCH	A	B	C	D	
OTB-144(324R)-1.0-004	13×13	12×12		144	1.0	32	32	18.9	2.2	
OTB-176(324R)-1.0-002	15×15	14×14		176						
OTB-208(324R)-1.0-003	17×17	16×16		208						PBGA
OTB-260(324R)-1.0-01	19×19	18×18		260						
OTB-324R-1.0-01	19×19	18×18		324						PBGA

Shrink OTB-676R SERIES (1.0mm PITCH)

PART NO.	APPLICABLE IC DIMENSIONS (REF.)					OUTSIDE DIMENSIONS (REF.)				REMARKS
	BODY SIZE	GRID	ROW/ARRAY	LEADS NUMBER	PITCH	A	B	C	D	
OTB-548(676R)-1.0-01	27×27	26×26	Depopulated	548	1.0	47	47	18.9	2.2	
OTB-484(676R)-1.0-03	23×23	22×22	Fully Array	484						
OTB-336(676R)-1.0-10	21×21	20×20	Depopulated	336						
OTB-360(676R)-1.0-22	20×20	19×19	Depopulated	360						
OTB-289(676R)-1.0-17	19×19	17×17	Fully Array	289						
OTB-260(676R)-1.0-27	19×19	18×18	Depopulated	260						
OTB-256(676R)-1.0-28	17×17	16×16	Fully Array	256						
OTB-260(676R)-1.0-19	14×22	13×30		260						
OTB-272(676R)-1.0-036	13.5×24	12×23		272						

OTB-1681R SERIES (1.0mm PITCH)

PART NO.	APPLICABLE IC DIMENSIONS (REF.)					OUTSIDE DIMENSIONS (REF.)				REMARKS
	BODY SIZE	GRID	ROW/ARRAY	LEADS NUMBER	PITCH	A	B	C	D	
OTB-576(1681R)-1.0-016	25×25	24×24		576	1.0	64	64	23	2.2	
OTB-625(1681R)-1.0-04	27×27	25×25	Fully Array	625						
OTB-1089(1681R)-1.0-03	35×35	33×33	Fully Array	1089						
OTB-596(1681R)-1.0-07	31×31	30×30		596						